



BESOTEL®

Ferienwohnungen und
Apartments ★★★★★

Mettmann

Welcome



Hike through the romantically picturesque Neandertal valley, climb the new Baumgipfelturm tower, take a historic ride on the suspension railway in Wuppertal or visit the old town in Düsseldorf.

All this and much more is possible during your stay in our holiday flats. Our accommodation is conveniently located close to all major motorways. So you can look forward to an unforgettable break in a prime location!

On the following pages you will find useful information for your stay and about each property. If you have any further questions, please do not hesitate to contact us.

We wish you a great time, have a good time with us!

Your team from BESOTEL

Content

[Contact us](#)

[Arrival](#)

[key access](#)

[Floor plans](#)

[Apartments](#)

[Parking](#)

[WLAN](#)

[Equipment](#)

[Coffee](#)

[Washing](#)

[Waste](#)

[Smoking & Partys](#)

[Heating](#)



[Emergency numbers & Taxi](#)

[Restaurant 1](#)

[Restaurant 2](#)

[In the near](#)

[Departure](#)

[Shopping](#)

[Dogs](#)

[Personal recommendation](#)

Contact BESOTEL



Telefon [+49 2104 80 97 800](tel:+4921048097800)

Email Info@besotel.de

Adress Elberfelder Str. 180
40822 Mettmann

[Routenplaner](#)

Office open

MO - FR 9-12 h

SA 10-16 h

MO, DI, DO, FR. 14-19 h



Travelling

Travelling by public transport

The Mettmann-Stadtwald S-Bahn station is only a few minutes away from our flats. Here you have connections to the following railway lines:

S28 to Düsseldorf main station (with connections to Cologne, Essen, Dortmund, Messe Düsseldorf and Düsseldorf Airport)
S28 to Wuppertal main station (with connections to Cologne)

You will find bus stops on the opposite side of the street. Bus 745 and SB68

Travelling by car

The A3 motorway with the Mettmann exit is approx. 8 minutes away. The A46 motorway is about 9 minutes away. These motorways will take you quickly to all major cities such as Düsseldorf, Cologne, Neuss, Bonn, Essen, Duisburg, Wuppertal, Oberhausen, Krefeld, Mönchengladbach and Dortmund as well as to Düsseldorf and Cologne-Bonn airports.



[Routenplaner](#)

For E-Cars

[Charging
stations
Mettmann](#)



1. Keyboy

You will find the key dispenser to the left of our front door. Please enter the 6-digit code from the email 'Before arrival'. Your front door key and flat key will then be placed in the dispenser.



2nd NUKI touchpad (black)

Our Nuki system sends an email with a 6-digit code 3 days before arrival. You can enter this code on the black touchpad on the respective doors.

1



This works during your stay at the flat and main entrance door.

2



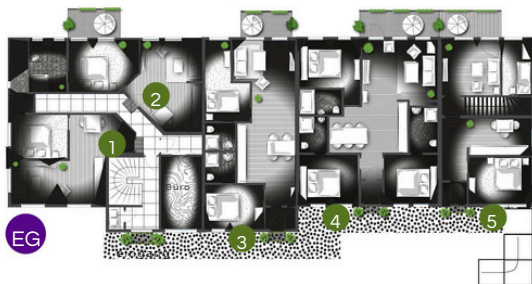
Car parks

On our premises at Elberfelder Str. 180 in Mettmann you will find many illuminated parking spaces for your vehicle. Parking is also possible on the street.

You will find our property directly on the Röttgen housing estate. If you are interested in handing over the keys in person, please let us know in good time.

As an alternative and for late arrivals, you have two different ways to enter the flats easily and contactlessly.





Apartments Mettmann

[Wohnung 1 - EG links](#)

[Wohnung 2 - EG links](#)

[Wohnung 3 - EG Mitte](#)

[Wohnung 4 - EG rechts](#)

[Wohnung 5 - EG rechts](#)

[Wohnung 6 - OG links](#)

[Wohnung 7 - OG links](#)

[Wohnung 8 - OG links](#)

[Wohnung 9 - OG rechts](#)

[Wohnung 10 - OG rechts](#)

[Wohnung 11 - DG links](#)

[Wohnung 12 - DG links](#)

[Wohnung 12 3/4 - DG links](#)

[Wohnung 14 - DG links](#)



WLAN

Password

BESOTEL

not needed



Knowing problems

The login page does not appear

1) Are you connected to the correct WLAN?

Please check in the connection settings of your device whether you are successfully connected to the 'BESOTEL' Wi-Fi network. The operator may have given the Wi-Fi a different name - in this case, simply ask for the Wi-Fi name.

2) Have you tried to access a different website?

Websites with encryption (recognisable by the https://) sometimes cause problems with hotspots. Simply enter 'login.myhotspot.com' in the address bar of your browser. The login page should now be displayed.

3) Is the IP address on your device set to

'automatic'? The IP address must be set to 'automatic' on every device. This is the factory setting for all devices. If these settings have been changed to 'static' at some point, they must be set back to 'automatic'.



equipment

This is what you get at
BESOTEL in every flat and
apartment



Spacious flats
Children up to 6 free of
charge
Free, secure & fast WLAN
towels
Bed linen
Blankets & pillows
Ironing station
Hairdryer & various
toiletries
Mineral water
Coffee machine with coffee
Free parking

Optional :
Baby cot
Extra bed

Check-in from 15 h
Check-out until 11 h



COFFEE MACHINE

Our flats are all equipped with a Tchibo bean-to-cup coffee machine.

The coffee machine is filled with beans once by us. We clean and maintain our coffee machines regularly. Of course, this also includes descaling. However, an automatic rhythm runs in the machine (cups are counted!). Therefore, despite our best efforts, you may have to descale the machine during your stay. We have provided you with two bags of descaler in our kitchen for this purpose.

[Tchibo Coffeemat using manual](#)



WASHING STATION

The washing station is located on the ground floor in the entrance area.

Please always leave the washing station clean and tidy:

Wiping away spilt detergent or sweeping away powder!

Empty the lint filter in the dryer so that the next guest can dry their laundry properly!

If something doesn't work, let us know and we'll take care of it as quickly as possible. Telephone number: 02104/8097800 (Please always leave a message on the answering machine if you cannot reach us directly).

Whether washing machine or tumble dryer.

Both run on € 2.00, which is enough for about 3 hours



SMOKING, PARTIES AND OTHER RULES



Our house rules are based on an old principle:
‘Treat others as you would like them to treat you.’

Here are a few important points that uphold this principle:

No parties or noisy events of any kind are permitted at BESOTEL Mettmann. Please do not disturb others by making excessive noise.

Smoking is prohibited inside the flats and at the window.

Always be friendly to other guests and show consideration.

Treat our flats and furniture as if they were your own.

Please treat everything with care. Please do not enter the building with dirty building site shoes. When you leave the house, please switch off the lights and close the windows. Please leave the property as you found it.

If you do not adhere to these rules, we will have to charge you up to €350.00 for the associated costs.

Thank you for your understanding

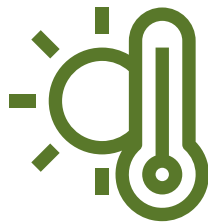


HEATING CONTROL

The heating system used in the BESOTEL Mettmann is a modern gas heating system. We have equipped this heating system with a centrally controlled preset system, which is designed for effective energy consumption and creates a pleasant room climate for you.

We have taken the liberty of making some pre-settings here, so the authority thermostats cannot be controlled by you.

The temperature is determined by the outside temperature and is usually between 21 and 23 degrees.





Emergency numbers

Police	110
Fire brigade	112
Suicide defence	0800 111 0 111
Animal rescue	+49 174 770 3000
Hospital Mettmann	+49 2104 7730

Taxi & Rented Car

Taxi Mettmann	+49 2104 177 8592
<u>Taxi with heart</u>	+49 2104 508 7008
VW FS Carrental	+49 2104 925362

BESOTEL® accepts no liability for your personal belongings, cash or valuables, even if they are in the safe. We have camera surveillance outside.



Restaurants

Hopmanns Olive - Erkrath

Hopmanns Olive is the gourmet restaurant in Erkrath-Hochdahl run by Petra and Ingo Hopmann. The light Mediterranean cuisine with regional accents in a unique ambience with a summer garden and historic engine shed, please make a reservation.

EssensArt - Haan

A fine-dining restaurant 'EssensArt' with a tasty connection to the region. Situated on the green outskirts of the garden city of Haan. A top address for guests and connoisseurs. Please make a reservation.

The Stadtwaldhaus Mettmann

It's that time again, a new seasonal menu awaits you at the Stadtwaldhaus in Mettmann.



Restaurant Kupferkanne - Erkrath

The Postillon is an inviting and traditional Spanish restaurant in Mettmann. They offer classic Spanish cuisine, lovingly prepared with high-quality ingredients.



Brauhaus - Erkrath

A freshly tapped beer combined with classic, modern brewery cuisine in a stylishly interpreted brewery ambience in the unique industrial setting of the old paper mill. Here you will find a flavourful mix of a restaurant with a classic brewery atmosphere.

Gut Jägerhof - Erkrath

We invite you to Gut Jägerhof in Erkrath . An enjoyable dining experience with the best ingredients, high-quality meat products and delicious salads. A steakhouse in a rustic ambience surrounded by nature. A spacious country restaurant with terrace awaits you in the former barn.



[Leisure activities Sightseeing](#)



THE NEANDERTAL & THE AREA

Surely you want to do something and are looking for practical tips or destinations in the area. We have several pages on our website with interesting and special destinations in the area and in Düsseldorf.

[The Neanderthal Museum - Erkrath](#)

[The Neanderland - Mettmann](#)

Neanderland begins just outside the gates of the major metropolises on the Rhine and Ruhr and extends far into the Bergisches Land region. The tourist region around the district of Mettmann stands for adventure culture, tradition and joie de vivre. History, art and events as well as a huge range of sports and leisure activities take centre stage.



Departure

- Have another look in the cupboards and drawers - is everything packed?
- You are welcome to strip the beds.
- Please put used towels on the floor in the bathroom
- Empty the fridge and dishwasher completely.
- If you have set a different language on your Smart TV, please switch it back to German.
- Please switch off the lights in all rooms.
- Please close all windows and doors.
- If you have used a normal flat key, please return it to the key safe.
- We have rubbish bins in different colours in front of the house. Please dispose of your rubbish accordingly.

We thank you for your help and wish you a safe and pleasant journey.



Shopping in Mettmann

[Lidl Mettmann](#)

Open Mo - Sa 7 - 21 Uhr

[Seibelstraße 2](#)
[40822 Mettmann](#)

[Netto Mettmann](#)

Open Mo - Sa 7 - 21 Uhr

Blumenstraße 27
40822 Mettmann

[ALDI Nord](#)

Open Mo - Sa 7 - 21 Uhr

Flurstraße 20
40822 Mettmann

[REWE](#)

Open Mo - Sa 7 - 22 Uhr

Schwarzbachstraße 14
40822 Mettmann,

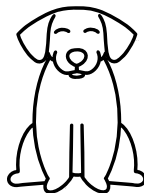
[Galerie Königshof](#)

Open Mo - Sa 10 - 19 Uhr

Talstraße 10
40822 Mettmann



DOGS in BESOTEL



HDogs are very welcome in our flats. There are no restrictions for guard dogs. So-called fighting dogs are not allowed.

Please bring the necessary papers for your dog. A maximum of one dog should be accommodated per flat. Dogs are generally not allowed in beds. As the owner, you must of course pay for any damage or soiling. Outside the flat, the dog must be kept on a lead.

Please bring a sleeping pad for your dog. Other accessories should also be included. Please do not use our towels to clean your dog. Please bring your own towels. We charge a surcharge of €20 for dogs.

Cats are not allowed.



Personal recommendation



Mettmann railway station is nearby. The S28 will take you to Düsseldorf main station in 10 minutes. There you can hire e-scooters and discover Düsseldorf.

The Classic Remise in Düsseldorf combines special old and classic cars with delicious food. A highlight in Düsseldorf.

The Haan Golf Club is nearby and also offers a restaurant.

The city of Solingen was a 'workshop for the world' with its cutlery production at the end of the 19th century. Experience the art in the Hendrichs drop forge at the LVR Industrial Museum in Solingen.

VABALI - the Balinese wellness oasis on Düsseldorf's Elbsee lake

The suspension railway - Wuppertal's landmark - runs on a 13 km long line through the city. Most of it runs over the River Wupper.



Report a problem

You have noticed a problem in one of our flats. Click on the link below to send us a message about an existing problem.



[Here tell the problem](#)